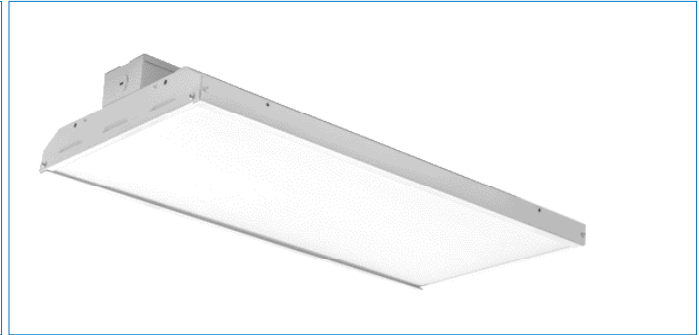
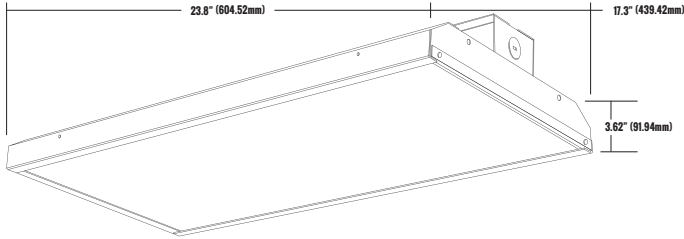


CATALOG #		TYPE
PROJECT		DATE
PREPARED BY		

PRODUCT CODE: HBL2-160U50-WH

LED LINEAR HIGH BAY/2FT



PRODUCT DESCRIPTION

Etlin-Daniels is pleased to introduce their new LED Linear Highbay offering the HBL2 Series. At only 2 feet in length, these fixtures provide high lumen efficacy, excellent color rendering, flexible mounting options, are damp location rated, and have precision designed, frosted optics. The HBL2 Series offer the very best in performance and energy-efficient solutions for industrial, commercial, retail and sports applications. Further energy savings can be achieved by taking advantage of the installed 0-10V Continuous dimming option.

- Multiple color temperatures available in stock.


FEATURES

- Compact 2' length
- Frosted lens
- Multiple mounting options
- Wire guard available
- >120LM/W efficacy
- CRI >80
- 50,000hr L70
- cULus certified
- DLC Standard
- 0-10V continuous dimming
- 5 year limited warranty

PRODUCT SPECIFICATIONS (OPTICAL DATA)

LED TYPE	LED QTY	SYSTEM EFFICACY	LUMENS	COLOR TEMPERATURE	BEAM ANGLE	CRI	SYSTEM EFFICIENCY	VOLTAGE	POWER FREQ.	POWER EFFICIENCY	POWER FACTOR	HARMONIC DISTORTION
LG	336 CHIPS	120.5M/W	19,280LM	5000K	120°	>80CRI	>85%	AC120~277V	50~60HZ	>85%	>0.95	<10%

PRODUCT SPECIFICATIONS

WATTAGE	FIXTURE MATERIAL	LIFE SPAN	STORAGE TEMP	OPERATING TEMP	PRODUCT DIMENSIONS	CARTON SIZE	
160W	BAKED WHITE ENAMEL/OPAL LENS DIFFUSER	>50,000 HOURS	-30°C~-50°C -22°F~-122°F	-40°C~-80°C -40°F~-176°F	23.8 X 17.3 X 3.62 INCHES (604.5 X 439.42 X 91.94 MM)	24.80 X 12.95 X 3.85 INCHES (630 X 329 X 98 MM)	

ADDITIONAL INFORMATION

INSTALLATION METHOD

V HOOK & CHAIN/PENDANT MOUNT APPLICATIONS

FIXTURE COLOR

WHITE ENAMEL/OPAL LENS

CONTROL TYPE

0-10V CONTINUOUS DIMMING

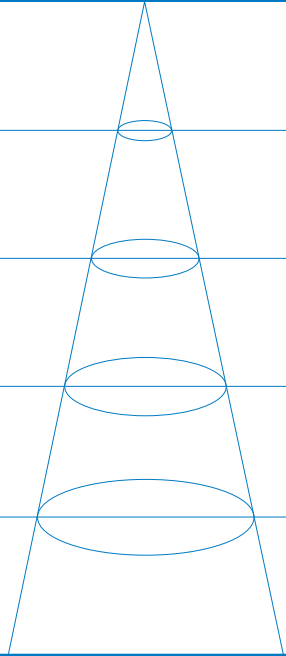
CATALOG #		TYPE
PROJECT		DATE
PREPARED BY		

PRODUCT CODE: HBL2-160U50-WH

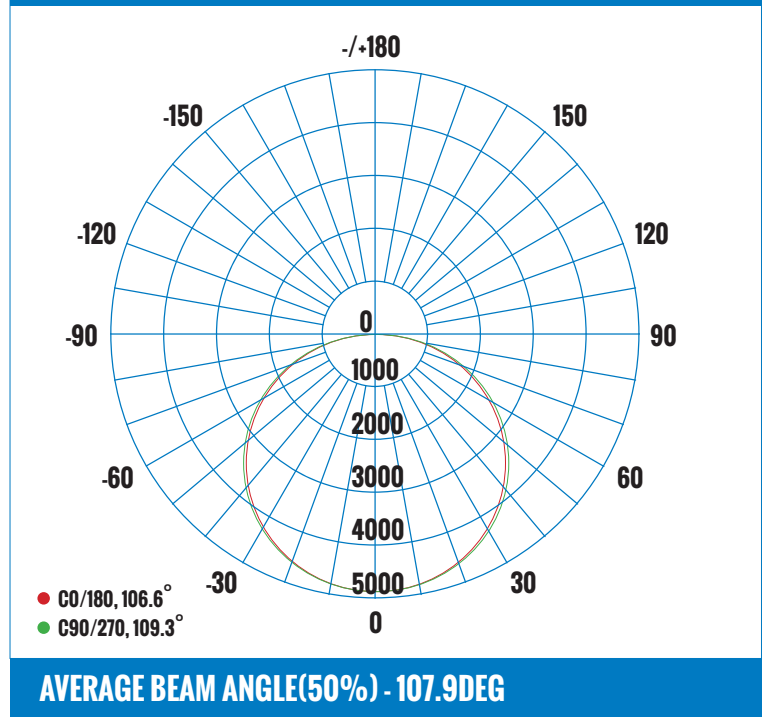
LED LINEAR HIGH BAY/2FT

LUMINAIRE PHOTOMETRIC (TEST REPORT)

ILLUMINANCE (AT A DISTANCE) - FLUX OUT: 13,941LM

5.57FT 1.7M	810.5, 2471LX		14.95FT 455.90CM
8.85FT 2.7M	321.3, 979.4LX		23.75FT 724.07CM
12.13FT 3.7M	171.1, 521.5LX		32.55FT 992.25CM
15.41FT 4.7M	160.0, 323.2LX		41.35FT 1260.42CM
18.70FT 5.7M	72.10, 219.8LX		50.15FT 1528.60CM
HT	EAVG/EMAX	ANGLE: 106.57DEG	DIA

LUMINOUS INTENSITY DISTRIBUTION DIAGRAM

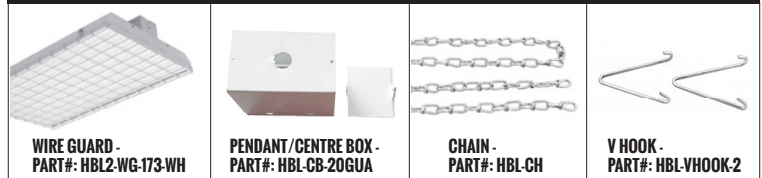


CERTIFICATIONS

DRIVER/LED CHIP



MOUNTING OPTIONS/ACCESSORIES



ORDERING INFORMATION - HBL2 SERIES

SERIES	SIZE	WATTS	VOLTAGE	COLOR TEMPERATURE	DIMMABLE	FINISH
E.G. HBL	2	160	U	5	0	WH
HBL - HIGH BAY LINEAR	2 - 2'	160 - 160W	U - 120-277V	5 - 5000K	0 - 0-10V CONTINUOUS DIMMING	WH - WHITE

Head Office - 1850 Wilson Ave. · Toronto, ON · M9M 1A1 · Tel: 416.741.7336 · Fax: 416.741.9104

Toll Free: in Canada. 1.800.661.9610 · in USA. 1.888.762.5384 (SOCKETS4U)

www.etlin-daniels.com · For sales/service questions - sales@etlin.com